

Globe Real Estate



G6

Adult
lifestyle
homes



G2

Newmarket
celebrates
200 years

THE GLOBE AND MAIL • CANADA'S NATIONAL NEWSPAPER • WWW.GLOBEANDMAIL.COM • FRIDAY, MAY 18, 2001

Top of the city

Liberty is a step away from shops and parks

The Liberty Development Corp.'s Liberty Tower is an exciting addition to the burgeoning community of Markham. The project is comprised of 115 condominium suites and 15 condominium townhomes.

Located just 30 minutes from downtown Toronto and the airport, the Galleria neighbourhood is one of Markham's superior locations. With easy access to Highways 404, 107, 7 and Bayview Avenue, the residents of the Liberty Tower can quickly travel across the GTA and beyond.

This master-planned community is home to many new and established residents. Surrounded by such amenities as restaurants,

shops, entertainment and the area's high-tech business sector, the Galleria neighbourhood offers a community park, walking trails and plenty of green space.

The Liberty Tower is elegant and sophisticated in appearance, with red brick, stucco and expansive windows. The lofty two-storey lobby offers a warm and inviting fireplace and furnished reception area, complete with concierge.

Building amenities will include a gym/exercise room, equipped with a sauna and whirlpool, a multi-purpose party room with wet bar and kitchenette, a business centre and a guest suite for overnight visitors.

The condominium suites at the Liberty Tower range in size from

566 to 1,550 square feet and feature plans for one-bedroom, one-bedroom-plus-den, two-bedroom, two-bedroom-plus-den, three-bedroom and three-bedroom-plus-den suite designs.

Suite features include five appliances, polished marble foyers, imported ceramic tiles in kitchens, bathrooms and laundry rooms, 40-ounce broadloom in living rooms, dining rooms and bedrooms.

Kitchens feature European style cabinetry and ceramic tile backsplashes. Also included in the purchase price is one underground parking space.

The condominium townhomes feature spectacular layouts that optimize living space. All models are three-bedroom-plus-family-room plans, ranging in size from 1,682 to 1,975 square feet. These all-brick homes are attentively detailed with arches and keystones. Each home provides deck area, landscaped lot and attached garage with direct entry to the first level, while some plans feature a private balcony.

Preview pricing starts at \$119,900 for the condominium apartments and from \$245,900 for the condominium townhomes. Occupancy for both the condominium suites and townhomes is projected for the summer of 2002.

With mortgage rates continuing at all-time lows, discounted mortgage rates are available from the vendor's selected banking institution.

Liberty has more than 30 years of development and management



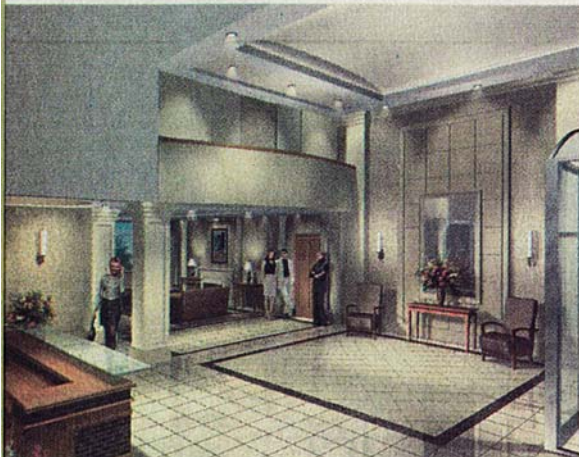
ILLUSTRATIONS: LIBERTY

The Liberty Tower is sophisticated in appearance, with red brick, stucco and expansive windows.

experience, including Times Square, Commerce Gate, Villa Hermosa, Saddlecreek at the Galleria and

the Galleria townhomes. The Liberty Tower sales office is located on Times Avenue, just

south of Highway 7. Call 905-762-1138 or visit www.libertydevelopmentcorp.com



The lofty two-storey lobby offers a warm and inviting fireplace and furnished reception area, complete with concierge.

ON SITE

Fashionably on time

Classic architecture dresses up the fashion district

There's something new on the horizon, as the Morgan rises in the heart of Toronto's Fashion District. Construction is progressing quickly, as Great Gulf Homes pours a floor a week on the 16-storey modern masterpiece, which has already risen to more than 11 floors.

The Morgan's stepped roofline and classic architecture add a stately air to the city's skyline. Sales have been brisk, with more than 80 per cent of the suites already sold. An

excellent selection of condominium apartments remain, but with first occupancies slated for spring of 2002, they'll go quickly.

Suites range from 610 to 2,390 square feet and are priced from the \$170,000s. Great Gulf is offering a stainless steel upgraded kitchen package (valued at \$8,000) with every suite purchase. You can also take advantage of pre-construction prices on the choice suites still available.

Spectacular views through expansive windows top the list of standard

features at the Morgan. Depending on the direction your suite faces: panoramic vistas include lake scenes, Casa Loma and breathtaking cityscapes.

The Morgan is only steps away from world-famous entertainment dining and shopping. Inside, residents will enjoy a 24-hour concierge service and a host of amenities reminiscent of an exclusive private club. The sales office is on the southwest corner of Richmond Street and Spadina Avenue. Call 416-362-3374